

# Kubota



## KUBOTA COMPACT EXCAVATOR

# KX

## KX057-4

Superior 5.5-ton compact excavator with the right power and flexibility for most all of your needs.



\*This information is sourced from overseas and may not necessarily apply locally. It is essential that you confirm specifications and other information with your local Kubota dealer.

# KX057-4 OPTIONS

## STANDARD EQUIPMENT

### Safety system

- Engine start safety system
- Travel motor with disc brake
- Swivel motor with disc brake
- All hydraulic control

### Working equipment

- Auxiliary circuits 1 and 2
- 2 working lights on cab and 1 light on the boom
- Canopy lights
- Travel alarm
- Float blade

### Operator's space

- ROPS/FOPS canopy and cab
- Weight-adjustable full suspension seat
- Retractable seat belt
- Hydraulic pilot control levers with arm rests
- Travel levers with foot pedals

- Two pattern selection system
- Digital panel
- 12V power source
- Cup holder
- Horn

### Engine/Fuel system

- Double element air filter
- Auto idling system
- Water separator with drain cock

### Undercarriage

- 400 mm rubber track
- 1 × upper track roller
- 5 double-flange track rollers on each side
- 2-speed travel switch on dozer lever
- 2-speed travel with auto-shift

### Hydraulic system

- Pressure accumulator
- Hydraulic pressure checking ports

- Straight travel circuit
- Third line hydraulic return
- 3-pump load sensing system
- Adjustable maximum oil flow on auxiliary hydraulic circuits 1 and 2

### Others

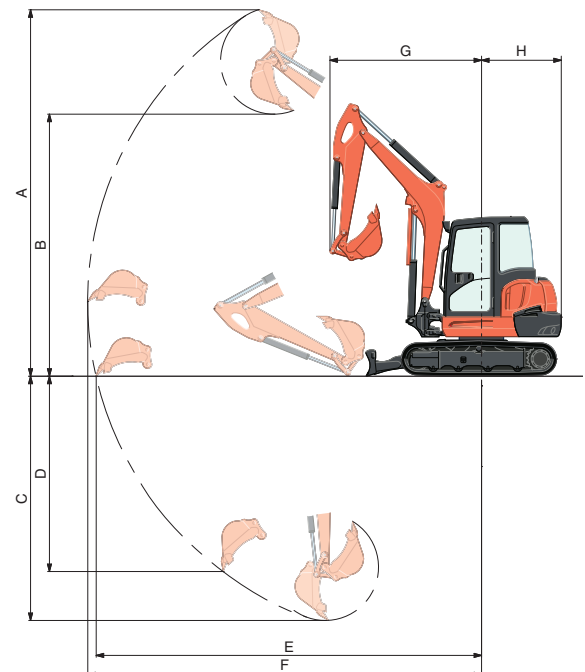
- Tool box
- Grease gun holder
- Pre-cleaner

## OPTIONAL EQUIPMENT

- Cab with A/C
- Rear working lights
- Beacon lights

## WORKING RANGE

Model		KX057-4		
A	Max. digging height	mm	5820	
B	Max. dumping height	mm	4160	
C	Max. digging depth	mm	3890	
D	Max. vertical digging depth	mm	3100	
E	Max. digging radius at ground	mm	6130	
F	Max. digging radius	mm	6260	
G	Min. turning radius	W/O swing	mm	2420
		W swing	mm	2005
H	Min. tail turning radius	mm	1270	

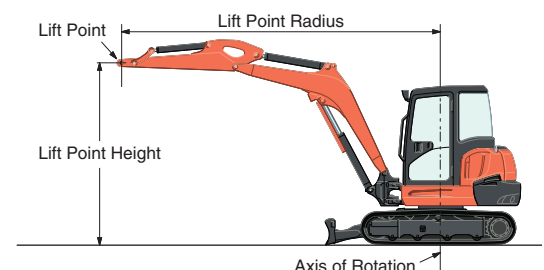


## LIFTING CAPACITY

Canopy rubber

LIFT POINT HEIGHT (m)	LIFTING CAPACITY OVER-FRONT BLADE DOWN unit = ton			LIFTING CAPACITY OVER-SIDE unit = ton			
	LIFT POINT RADIUS (m)			LIFT POINT RADIUS (m)			
	4	5	MAX	4	5	MAX	
3	1.05	0.97	0.89	0.90	0.62	0.61	
2	1.23	1.07	0.89	0.87	0.61	0.55	
1	1.44	1.15	0.95	0.82	0.59	0.52	
GL	0	1.57	1.17	1.07	0.79	0.58	0.54

Machine with canopy and rubber crawler, without bucket

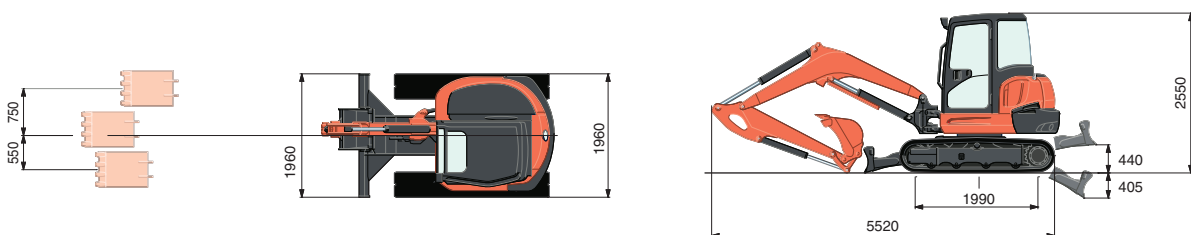


# SPECIFICATIONS

Model		KX057-4	
Type of ROPS / FOPS		Canopy / Cab	
Type of tracks		Rubber / Steel	
Engine	Model	Kubota V2607-DI	
	Output (SAEJ 1995 gross)	HP (kW) / rpm	47.6 (35.5) / 2200
	Output (SAEJ 1349 net)	HP (kW) / rpm	45.4 (33.8) / 2200
	Displacement	cc	2615
Dimensions	Overall length	mm	5520
	Overall height	mm	2550
	Overall width	mm	1960
	Min. ground clearance	mm	310
Hydraulic system	Pump capacity	ℓ/min	56.1 variable × 2 / 37.0 Gear × 1
	Auxiliary hydraulic flow	Left / Right ℓ/min	37 / 75
	Max. breakout force	Bucket / Arm kgf	4315 / 2500
Drive system	Travel speed	Rubber Low / High	km/h 2.8 / 4.9
		Steel Low / High	km/h 2.6 / 4.6
	Max. traction force	Low speed	kgf 6567
	Tumbler distance	mm	1990
	Crawler length	mm	2500
	Shoe width	Rubber / Steel mm	400
	Ground contact pressure	Rubber	kPa (kgf/cm <sup>2</sup> )
Steel		kPa (kgf/cm <sup>2</sup> )	31.4 (0.320) / 31.9 (0.326)
Swing system	Unit swing speed	rpm	9.3
	Boom swing angle	Left / Right degree	70 / 55
Blade	Dimensions	Width	mm 1960
		Height	mm 410
	Max. lift above ground	mm	440
	Max. drop below ground	mm	405
Hydraulic oil (Reservoir / System)		ℓ	45 / 79
Fuel reservoir		ℓ	75
Operating weight (Including operator's weight @ 75 kgs)	Rubber	kgs	5455 / 5545
	Steel	kgs	5555 / 5645

The company reserves the right to change the above specifications without notice. This brochure is for descriptive purposes only. Please contact your local Kubota dealer for warranty information. For your safety, Kubota strongly recommends the use of a Rollover Protective Structure (ROPS) and seat belt for almost all applications.

# DIMENSIONS



Unit: mm

©2009 Kubota Corporation



## KUBOTA Australia Pty Ltd

25-29 Permas Way, TRUGANINA Vic, 3029  
 Freecall: 1800 334 653  
 Email: sales@kubota.com.au

Web Site: <http://www.kubota.com.au>

## Kubota New Zealand Limited

Freecall: 0800-582-682  
 Email: sales@kubota.com.au

Web Site: <http://www.kubota.co.nz>